

Economy through *Automation*



Plastic Auxiliary Equipments from **World Leaders**





## Economy through Automation

### Solutions for Diverse Applications

Prasad Group of companies - started operations in 1984 for manufacturing post extrusion equipment for plastics industry. Now, Prasad has India's largest and most sophisticated infrastructure for manufacturing Plastic Auxiliary Equipments.

Automation, sophistication and upgradation of technology is the need of the hour and the company keeps itself fully updated to provide the same. Responding to the ever growing demand of automation solutions, the people at Prasad are always focused on customer satisfaction, operational excellence and above all design innovation.



**PET Preforms & Bottles**



**PET Recycling**



**Caps & Closures**



**House Hold & White Goods**



**Engineering Components**



**Wires & Cables**



**Automobiles**



**Electricals & Electronics**



**HDPE Pipes & Ducts**



**PVC Pipes & Profiles**



**Woven Sack**



**Flexible Packaging**

# Total Solution

## Raw Material to Finish Product

Storage	Handling	Drying	Conveying	Colouring	Cooling
---------	----------	--------	-----------	-----------	---------

Silo and Feeding System

Powder Batching and Conveying

Dehumidified Air Dryer

Central Conveying System

Volumetric Gravimetric Blender

Compact Chiller

**PNEUCON**  
SOLUTION

**plasmec**  
Excellence in Mixing

**KOCH-TECHNIK**

**KOCH-TECHNIK**

**KOCH-TECHNIK**

**gwk**



Heating	Handling	Conveying	Counting	Grinding	Recycling
---------	----------	-----------	----------	----------	-----------

Mould Temperature Controller

Servo Robots

Conveyor Belt

Counting Sorting Packing

Online Granulator

Granulator Shredders

**gwk**

**WEMO.**

**crizaf®**

**crizaf®**

**MODITEC**

**Rapid!**  
Reduce • Reuse • Recycle





# Prasad Koch-Technik Pvt. Ltd.

A joint venture with Werner Koch Maschinentechnik GmbH - Germany



## Hopper Loader & Ratio Loader

- For conveying wide variety of polymers.
- Output from 8 kg/hr to 2500 kg/hr.



## Dehumidified Air Dryer

- Most energy efficient design gives dew point up to  $-50^{\circ}\text{C}$ .
- Special line for PET & PET flakes integrated with inline crystalizer for throughput upto 700 kg/hr.
- Capacity from  $25\text{ m}^3/\text{hr}$  to  $3000\text{ m}^3/\text{hr}$ .



## Volumetric Feeder

- This modular feeding system gives accurate dosing and mixing of master batch online with microprocessor control.
- Supplied with optional agitator for homogenous mixing.



## All Metal Separator

- Protects plastic processing machine screw, barrel and die from ferrous and non-ferrous metal debris.
- Patented control eject unwanted parts out of the system online without disturbing main process.



## Gravimetric Blender

- Weighing, Metering, Controlling and Correcting in one operation, new GRAVIKO series gives highest accuracy in industry.
- Upto 8 component dosing and throughput for 1800 kg/hr.



## Central Conveying System

- Prasad Group has successfully commissioned many central conveying systems in India.
- Computerised sophisticated material management system caters from 4 machines to 40 machines with 16 different materials.



## Hot Air Dryer

- Stainless steel dryers with insulation are designed for easy cleaning and quick material change.
- Capacity from 15 ltrs. to 5000 ltrs.



## Silo and Silo Feeding System

- Aluminium, stainless steel and carbon steel with coating from  $5\text{ m}^3$  to  $100\text{ m}^3$  storage capacity.
- Silo Feeding System unloads material from 25 kg. bags and jumbo bags.



## Extrusion Process Control

- Control extruder output under  $\pm 0.5\%$  and saves expensive material by better GSM control.
- Ideal for multi layer film plant, pipe plant and calendering line.



## Debagging Surge Bin

- Different size of debagging bins to empty 25 kg., 250 kg., 500 kg. and 1 ton jumbo bags quickly and easily.
- Capacity from 100 ltrs. to 2500 ltrs.







## Prasad GWK Cooltech Pvt. Ltd.

A joint venture with Gesellschaft Warme Kältetechnik mbH - Germany



### Compact Chiller

- Energy efficient air/water cooled compact chillers, suitable for working in high ambient conditions.
- User friendly Microprocessor/PLC based controller with digital indication, function and fault details.
- Cooling capacity from 7 KW (2 TR) to 790 KW (225 TR).



### Screw Chiller

- Air/Water cooled type
- Cooling capacity from 140 KW (40 TR) to 900 KW (260 TR)
- Step less capacity control (25 to 100%)



### Air Chiller

- Direct cooling air chillers for blown film plants.
- Precise temperature control ensures uniform air temperature throughout the day.
- Lower air temperature at reduced power cost.
- Capacity from 1500 m<sup>3</sup>/hr to 10000 m<sup>3</sup>/hr.



### Mould Temperature Controller

Mould Temperature Controller (Water or Oil based) with precise microprocessor control with simultaneous display of set and actual values.

- Mould draining facility
- Leak stop operation
- Automatic re-feeding
- Fault indication
- Mimic diagram

Water based Mould Temperature Controller up to 150° C.



### Mould Sweat Protector

- Prevents sweating on the surface of the mould and thus allows to run mould at a lower cycle time that leads to high productivity.







# Prasad Wemo Robot Systems Pvt. Ltd.

A joint venture with Wemo Automation AB - Sweden

Wemo Automation AB, Sweden provides Indian plastic industry a competitive edge in modern automation.

All models in Wemo Robot systems are equipped with maintenance free AC servomotors. These servomotors facilitate lower energy costs, longer lifetime, higher performance and greater flexibility.



## Servo Robots

High speed servo & eco servo drive with all 3 axis full control system for injection moulding machine ranging 25 tons to 2500 tons.



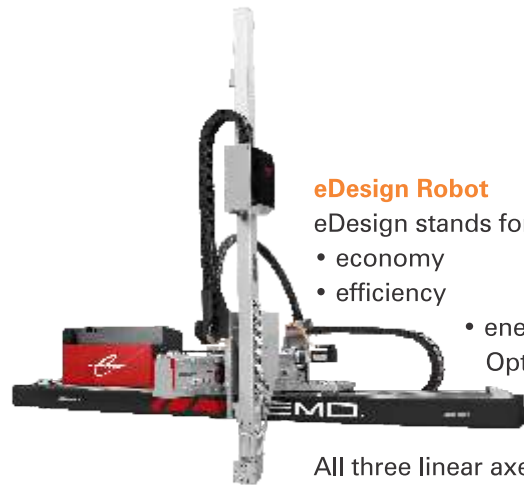
## Intelligent Control

Most advanced control in industry. Interactive dialogue mode with configurable symbols and text gives rapid and easy programming tool.



## New Servo Swing Arm Robot

This servo sprue picker is futuristic innovation from Wemo. A unique automation system with high speed rotating axis is ideal for sprue as well as parts picker for smaller injection moulding machines.



## eDesign Robot

eDesign stands for :

- economy
  - efficiency
  - energy saving
- Optimizes for cost efficient investment

All three linear axes are designed with high efficient AC servo motors for simultaneous movement (3D)



## Quick Gripper System

Patented WGS : Quick - Lock Grip Exchange System can be adapted to new as well as to existing robots. Reduce setting & gripper changing time drastically in case of rapid product mould changing.



## Gripper Kit GBL1

GBL 1 is an easy starter kit, made out to facilitate the start for the inexperienced fitter. The starter kit contains more than 300 components making it possible to build up to 9 different grippers.





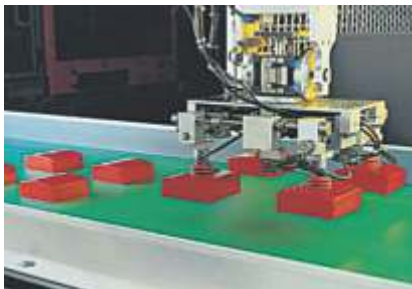


**crizaf®**

## Prasad Crilec Automation Pvt. Ltd.

A joint venture with Costruzioni Meccaniche Crizaf S.p.A. - Italy

Prasad offers Polymer conveyor belts from world renowned Crizaf, S.p.A, ITALY. This intelligent part conveyor integrated with other ancillary equipment can greatly increase quality and efficiency of the processing unit.



Horizontal Conveyor Belt (with robots)



Plastic Conveyor Belts



Sprue Separator and Conveying



Drum Separator



Parts Counting - Weighing



Stacking System

### Advantages of Crizaf Conveyor Belts

- Saving of labour & parts damage.
- Clean room condition - untouched by human.
- Integrated with Robots - assembly line.
- Automatic counting of parts & filling into box.
- Separation of sprue & parts automatically.
- Go under the mould - connected to online granulator.
- Can be integrated with any existing line.
- High quality and consistency in production.









## Prasad Machinery Pvt. Ltd.

Technical collaboration with Moditec s.r.l. - France

Moditec, France offers this patented technology which is very different than conventional grinder. It does not have any screen, knife or blades. When you use such Slow Speed Technology it works with no noise, no material distortion and no dust.



### The Power of Slow Speed

This technology works on 28 RPM and produces excellent quality of regrind without degrading polymer properties. PLC Base control and ABS – Anti Blocking System ensures full safety.



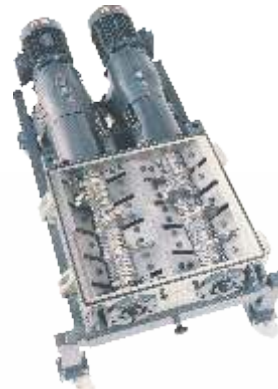
### Goliath Granulator

It is ideal solution for online process and by the machine recovery of plastic waste. It gives highest return on investment with technical polymers like PA, PC, Acrylic and glass filled material.



### Auger Feed Device

The Granulator with auger feed designed to be used directly under the mould, ideal for processing sprues and runners when robots or three platen moulds are used. Auger feed is with optional metal detection system to prevent undesired object to go inside cutting chamber.



### Goliath Twin

For higher output and bigger articles, Moditec offers Goliath Twin. This modular system employ same goliath cutter in segmented parts and each cutter is reversible so if required, cutter can be reversed and used without re-sharpening.



### Masher System

Patented masher system is specially designed for Goliath Twin or Bigger Granulator. It is the 3<sup>rd</sup> cutter fitted inside hopper. It grabs longer parts and pushes inside cutting chamber.



### Bigger Granulator

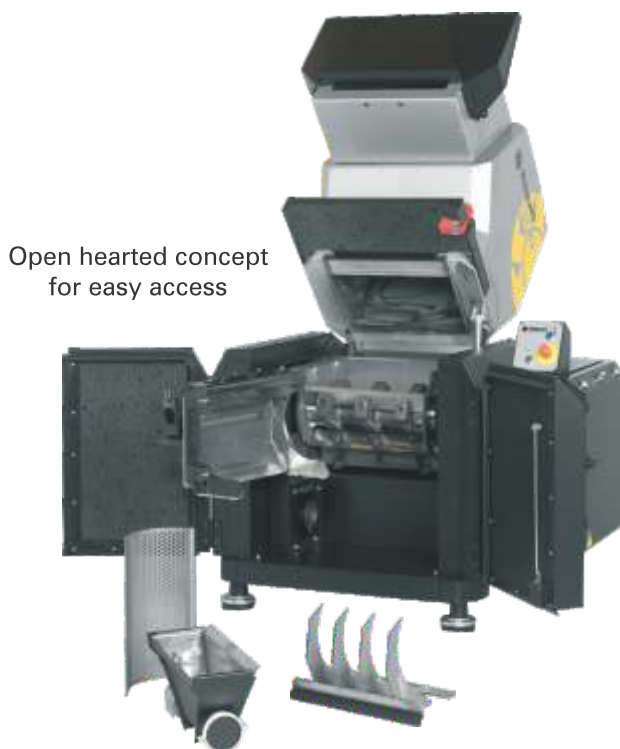
Designed for big & bulky objects like automobile bumpers, dash boards & pinch offs, sanitary, TV cabinets, washing machine buckets, refrigerator trays etc. It works on low speed, thus consumes much lesser energy.





Recycling plastic waste directly offers several advantages like material savings, improved flow management, increased competitiveness and environment-friendly manufacturing. Rapid manufactures individual granulators and complete integrated recycling system for the plastics industry. The company now offers its expertise and services in India under technical collaboration with Prasad Group.

Rapid's 40 years of experience gives solutions for individual demands. Every Rapid granulator is built to ensure that you get cost-effective granulation and high-quality regrind month after month, year after year.



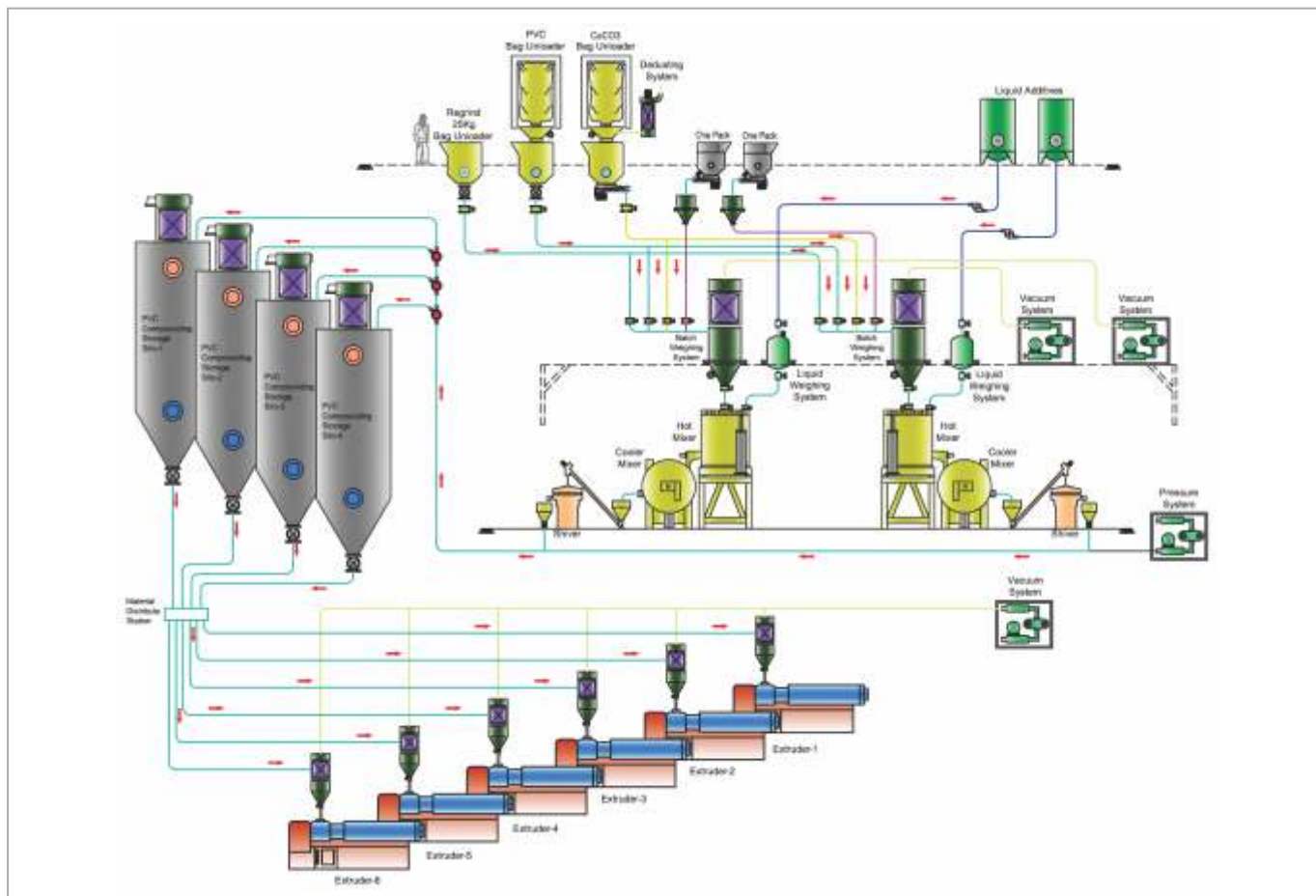
Complete Integrated Dust Separating System



Compact Series







#### Silo and Silo Feeding System

Manufacturing silo from 50 tons to 20,000 tons with carbon steel, stainless steel, aluminium dense and dilute phase with feeding system.



#### PVC Powder Conveying System

Conveying of PVC dry blend, filler or any kind of difficult powder was never been so easy. Pneucon powder loader with carbon filter cartridge and Jet pulse cleaning can give you output from 150 kg/hr to 2500 kg/hr.



#### PVC Dry Blend Batching System

To load PVC & CaCO<sub>3</sub> gravimetrically on high speed mixer can greatly increase the efficiency of mixer. Sophisticated control which can integrate with any existing system makes your operation errorless.



#### Additives and Liquid

Dosing additives and liquid gravimetrically on mixer improves quality of dry blend. This can be integrated with loading PVC and filler to automate whole process.

#### Total projects like....

- PVC pipes & profiles
- Masterbatch Compounding
- Polymer Compounding
- PVC Fittings
- Cable Compounding Plant
- Wood Plastic Composite









## Expositions



K - Germany



K - Germany



China Plast - Shanghai



Plastindia - Gandhinagar



Plastivision - Mumbai



Indiaplast - Noida

## Our Global Presence



# Milestones



## 1984 - 93

- Began operations with manufacturing plastic auxiliary and post extrusion equipments for Klockner Windsor India Ltd.
- Manufactured mono layer film plant PP500 and PP750 (Polypropylene and HM) for Klockner Windsor India Ltd.
- Manufactured Nitride screws for extrusion and injection moulding machines



## 1994 - 98

- Technical collaboration (in 1995) with Koch-Technik, Germany for manufacturing plastic auxiliary equipments - Dosing, mixing, conveying and drying systems
- Joint Venture (in 1996) with Koch-Technik, Germany
- Joint Venture (in 1998) with GWK, Germany to manufacture chiller and mould temperature controller
- Technical collaboration (in 1998) with Moditec, France to manufacture low-speed, high torque granulator, 'Goliath'
- 1st plastic auxiliary equipments manufacturer in India, to obtain ISO 9001:2000 quality certification



## 1999 - 03

- Supplied 1st central conveying system to Essel Packaging Ltd., Wada
- Shifted to new facility with an area of 15,840 sq. mts.
- Supplied 1st high-tech 'Goliath' twin granulator to Balmer Lawrie-Vann Leer Ltd., Mumbai
- Set-up new facility for GWK with modern insulated factory and pre-fabricated structure



## 2004 - 08

- Technical collaboration (in 2005) with Crizaf, Italy
- Joint Venture (in 2006) with Wemo Automation AB, Sweden to manufacture robots for plastic industry
- Technical collaboration (in 2007) with Rapid Granulator AB, Sweden
- 1st Robot installed on Injection moulding machine, Havells India Ltd., Baddi
- Technical collaboration (in 2008) with Ariostea, Italy to manufacture bulk material handling systems, PVC and all powder conveying



## 2013 - 2014

- Extension for manufacturing higher capacity screw type chilling plants
- Inauguration of new manufacturing facility for powder material handling system - Prasad Pneucon Solution Pvt. Ltd.
- New green office building for sales, marketing and finance

*and the journey continues...*





## Infrastructure

The lush green environment, insulated factory premises and work friendly atmosphere to support creation of world class products.



Spread across 72,000 m<sup>2</sup>, the company is equipped with modern infrastructure.











## Corporate Social Responsibility

The Group is equally committed to its Corporate Social Responsibility and is actively involved in upliftment of needy communities in several districts of Gujarat and Bihar through its close linkage with various NGOs and charitable trusts.

The activities include providing primary education and free health services, operating grain banks, deployment of water conservation projects and building homes for homeless.



Rain water storage



Leveling



Nursery



Assistance for business



Building check dams



Mass marriage



Midwifery training



Primary education





## Our Group

### PLASTIC AUXILIARY EQUIPMENTS DIVISION



#### PRASAD KOCH-TECHNIK PVT. LTD.

A joint venture with Koch Technik-GERMANY for manufacturing Plastic Auxiliary Equipments



#### PRASAD GWK COOLTECH PVT. LTD.

A joint venture with GWK-GERMANY for manufacturing Chillers and Mould Temp. Controllers



#### PRASAD WEMO ROBOT SYSTEMS PVT. LTD.

A joint venture with Wemo-SWEDEN for Servo Robot System and Automation in Injection Moulding



#### PRASAD CRILEC AUTOMATION PVT. LTD.

A joint venture with Crizaf-ITALY for Conveyor Belts and Part Handling System



#### PRASAD MACHINERY PVT. LTD.

Technical collaboration with Moditec - FRANCE for Online Slow Speed Granulators



Technical collaboration with Rapid-SWEDEN for Granulators



#### PRASAD PNEUCON SOLUTION PVT. LTD.

Bulk Material Handling Systems for PVC and other Powdery material



### TEXTILE MACHINERY DIVISION



#### PRASHANT GAMATEX PVT. LTD.

Technical Collaboration with 'GAMATEX s.r.l.', ITALY for High Speed Sectional Warping Machines & Creels



#### PRASHANT WEST POINT MACHINERY PVT. LTD.

Joint Venture with 'West Point Foundry & Machine Company', USA for Sizing Machines and Denim Preparation Equipments



#### PRASHANT TEXMACH PVT. LTD.

Complete range of Narrow Fabric Machinery and Continuous Dyeing and Finishing Machine for Tapes and Ribbons



#### PRASHANT FERBER AUTOMATION PVT. LTD.

Joint Venture with 'FERBER' s.r.l., ITALY for Computerized Vertical Beam Storage System



### VACUUM PUMP DIVISION



#### PPI PUMPS PVT. LTD.

#### PPI SYSTEMS

Manufacturing Water Ring Vacuum Pumps.





## PRASAD GROUP OF COMPANIES

ISO 9001:2015 CERTIFIED

14 & 16, Phase 1, G.I.D.C. Estate, Vatva, Ahmedabad-382445. India

Ph.: +91-79-2583 0112 / 2589 0687 / 2583 4323

Fax: +91-79-2583 0129

E-mail: [plastics@prasadgroup.com](mailto:plastics@prasadgroup.com)

Website: [www.prasadgroup.com](http://www.prasadgroup.com)

### SALES & SERVICE NETWORK

#### West:

Mumbai : 022-28019300, 9322143916

Vapi : 9328572963

Pune : 9325401351

Indore : 9827070528

Ahmedabad : 9377752617

#### North:

Delhi : 011-32907842, 9310701081

Haridwar : 9368308420

Chandigarh : 9356377722

Baddi : 9356666572

#### South:

Chennai : 044-23622230, 9385344442

Bengaluru : 080-23144760, 9341481016

Hyderabad : 9346735965

#### East:

Kolkata : 033-40083149, 9331264120

